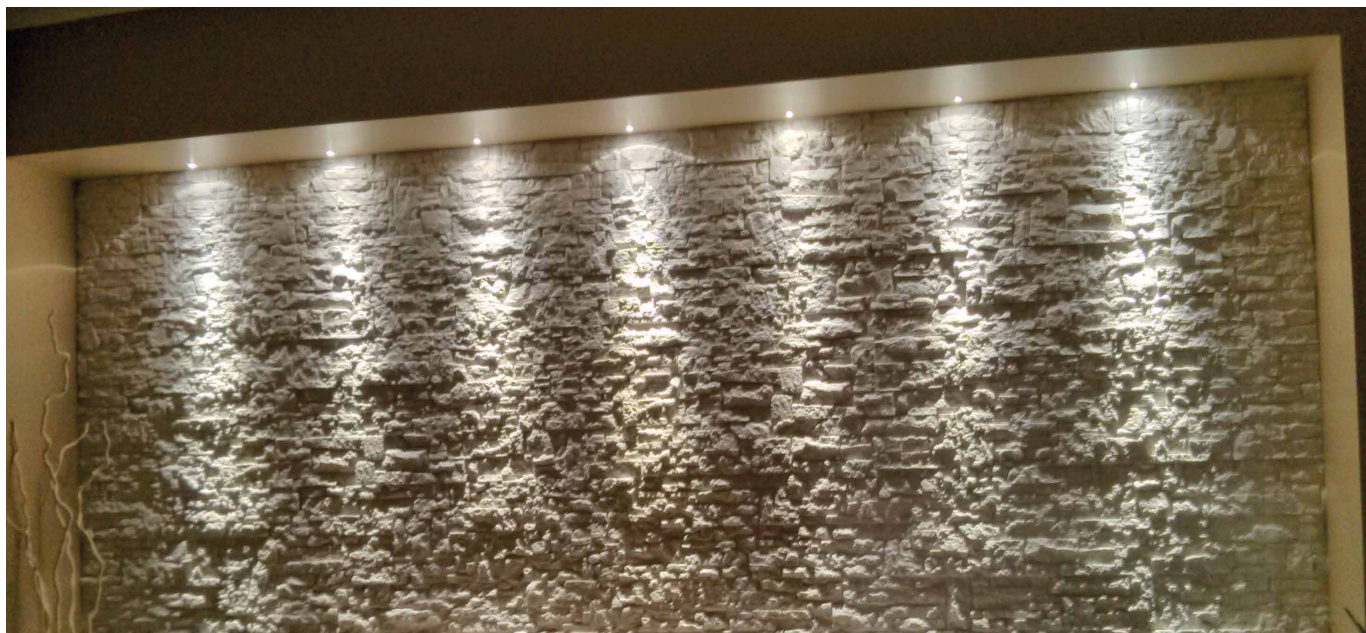


IRIDE W

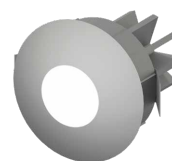
L9912.



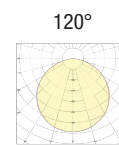
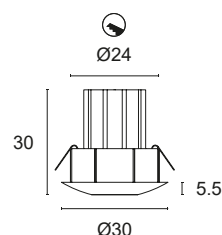
Flush-fitted in thermoplastic for accent, decoration and courtesy lighting. Diffuse lighting, can be installed indoors, pressure-mounted.

WICOP LED CRI>80
Power: 2W@12Vdc
Lumen: 216Lm@12Vdc
Constant 12Vdc voltage supply
Parallel connection, 50 cm cable

Constant voltage power supplies page 236
Accessories for quick connection page 245
Dimming Accessories page 249



 **MADE IN ITALY**



BASIC CODES

L9912.

FINISHES

- 1 White
- 2 Matt black
- 3 Brushed gold
- 6 Chrome
- 7 Brushed aluminium
- 8 Transparent
- 9 Polished gold

LED COLOUR

- BN** 4000K
- BC** 3000K
- CC** 2700K

Code example:

IRIDE W + White + 3000K = Code: L9912.1BC