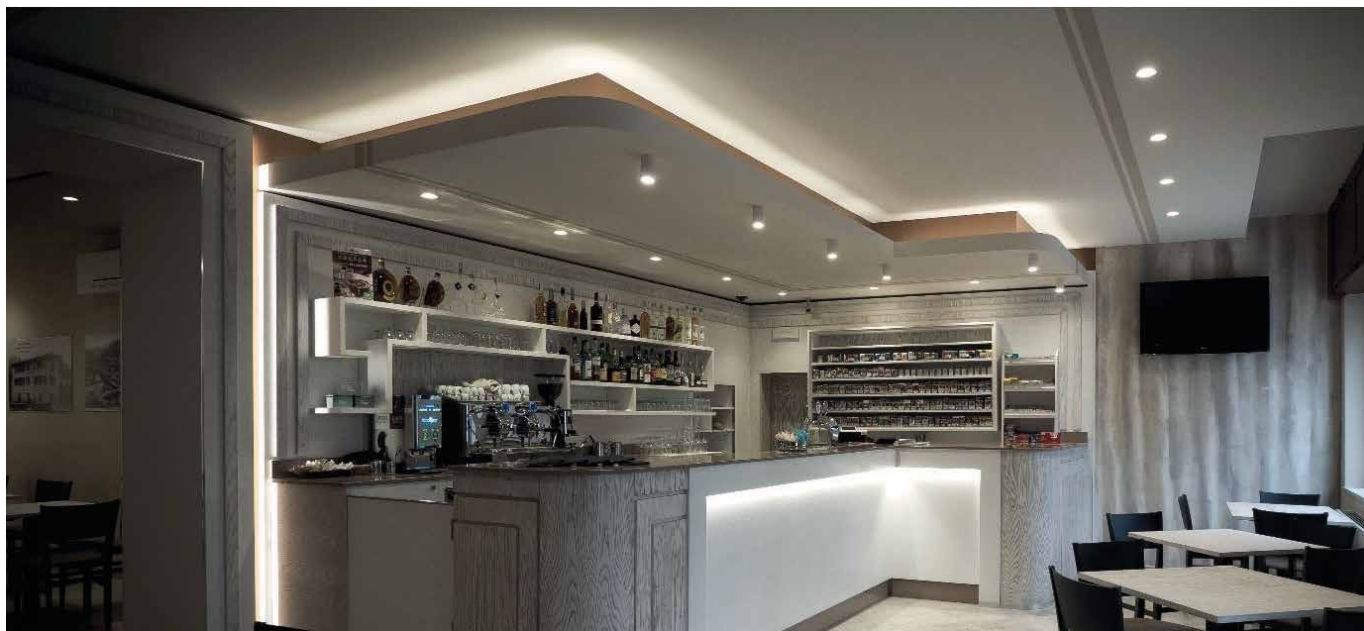


H1

H1.

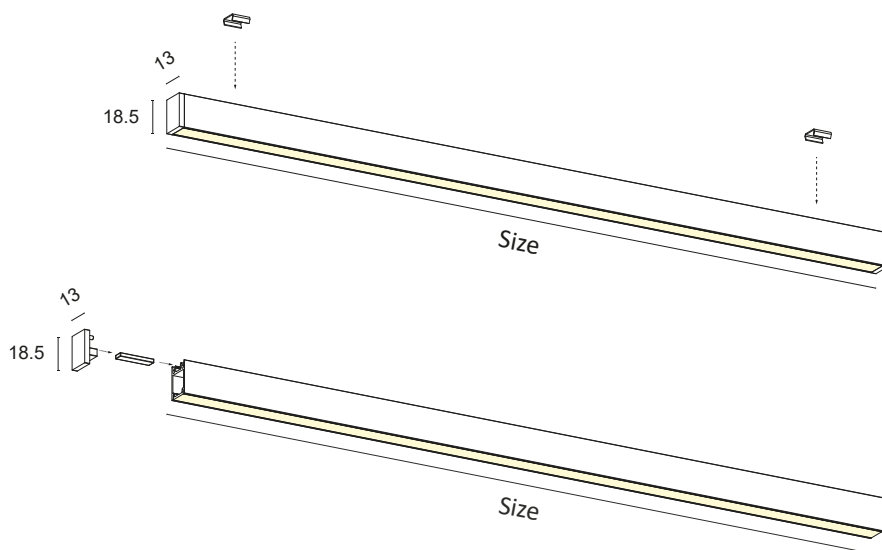
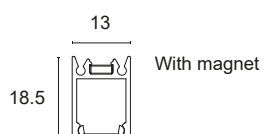
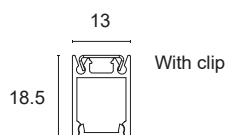
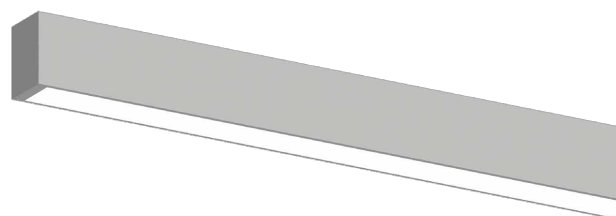


Decorated anodised aluminium lamp complete with press-fit brushed diffuser, side supports and LED source with a high Lumen/Watt ratio. Suitable for furnishing lighting and general lighting.
Mounting with concealed clips or magnets.

Constant 24Vdc voltage supply
Parallel connection, 50 cm cable

Constant voltage power supplies page 237
Dimming Accessories page 249

 **MADE IN ITALY**



BASIC CODES

H1.

FINISHES

- 1** White
 - 2** Matt black
 - 7** Brushed aluminium
- *Other finishes on request.

SIDE SUPPORTS

- 1** White
- 2** Matt black
- 7** Brushed aluminium

SIZE

- A** 300mm
- B** 450mm
- C** 500mm
- D** 600mm
- E** 700mm
- F** 800mm
- G** 900mm
- H** 1000mm
- I** 1200mm
- J** 1300mm
- K** 1400mm
- L** 1500mm
- M** 1800mm
- N** 2000mm
- O** 2300mm
- P** 2500mm
- Q** 2800mm
- R** 3000mm

LED COLOUR

- BN** 4000K
 - BC** 3000K
 - CC** 2700K
- *Strip also available coloured, Dynamic White, RGB.

POWER

D	10W/m	1400Lm/m	98LED/m	S2835	CRI>85	
D+	10W/m	1600Lm/m	112LED/m	S2835	CRI>90	
E	16.8W/m	2000Lm/m	140LED/m	S2835	CRI>85	
E+	16.8W/m	2000Lm/m	140LED/m	S2835	CRI>90	
F	20.2W/m	2500Lm/m	168LED/m	S2835	CRI>85	
F+	20.2W/m	2500Lm/m	168LED/m	S2835	CRI>90	
O+	12W/m	1000Lm/m	300LED/m	S2216	CRI>90	
P+	14.4W/m	1100Lm/m	180LED/m	S2216	CRI>90	
C2+	15W/m	1550Lm/m	COB LED		CRI>90	

*Energy class referring to light source

DIFFUSER

- S** BRUSHED

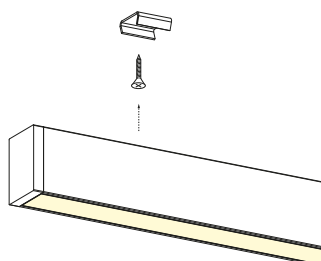
Code example:

H1 + White + Side supports white + H1 + 1000mm + 3000K + 10W//m CRI>85 + Brushed diffuser = Code: H1.11HBCDS

ACCESSORIES TO BE ORDERED SEPARATELY

BASIC CODES

PA.GG02

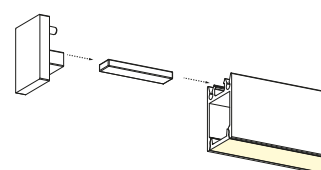


Steel clip for snapping onto flat surfaces. The clip hooks onto the rear slots, which will be perfectly adhered to the surface. 12xM2.5 screws included.

NB. We recommend No. 1 Clip per 500mm

BASIC CODES

NDL40XP5X2



Magnets to glue on for fixing on smooth metal surfaces.

NB. We recommend No. 1 magnet every 150mm (Max. attraction force 1.60kg).